

# ROCKFACE BLOCK COLOR PALETTE



**amcon**  
CONCRETE PRODUCTS, LLC™  
A TCC MATERIALS® COMPANY

# DESIGNER SERIES

Since the mid-sixties, rockface masonry units have been used for all types of construction, offering exclusive benefits to the building's owner, designer, and contractors.

**ONE-STEP INSTALLATION:** Amcon rockface units provide finished structural or non-structural walls in a single contractor, one-step operation. Amcon Concrete Products can offer significant savings in time and money. Economy - "the bottom line".

**NATURAL BEAUTY:** Amcon rockface units provide naturally colored aggregates from different parts of the country. They offer a wide color range and long-life performance that you would expect from masonry. Appearance - "a primary consideration."

**WATER REPELLENT:** Amcon rockface block can be manufactured with integral water repellent admixture providing a wall that resists water absorption. Amcon Concrete Products has been a certified integral water repellent manufacturer since 1989.

**MAINTENANCE-FREE:** Amcon's rockface finishes will last the lifetime of your building. Performance - "essential."

**DESIGN FLEXIBILITY:** Amcon rockface block offer the designer flexibility through a variety of colors, scoring, chamfers, patterns, bullnose, and other special shapes.



704 CORAL



720 KHAKI



740 LIME ROCK



754 GLACIAL WHITE



759 ICE WHITE



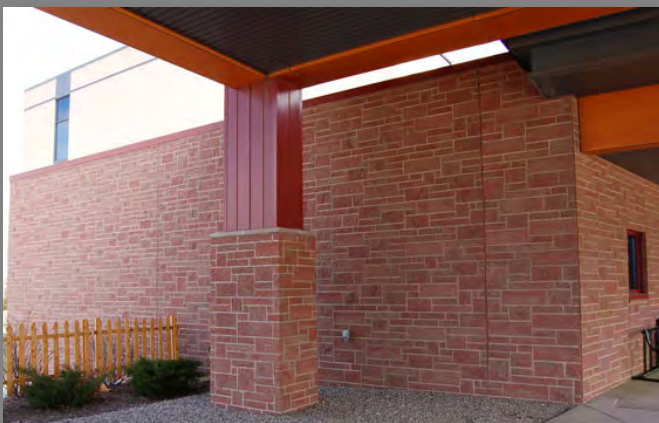
795 BUFF KASOTA



631 SEASHELL



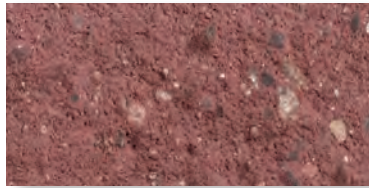
951 ONYX (Designer Plus Series)



# INTERMEDIATE SERIES



504 CINNAMON



509 CHOKE CHERRY



581 GREYSPICE



511 CORNMEAL



520 BONE



535 IVORY



536 SNOWDRIFT



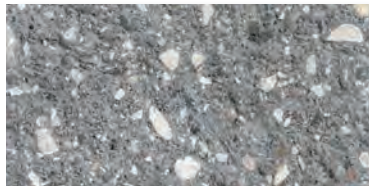
537 PLATINUM



539 DRIFTWOOD



541 CARMEL



542 AGGAZIZ



555 NUTMEG

Note: All colors are representative only. For color selection, always request a full size sample. All colors shown are available in burnished and rockface finishes. Other colors are available upon request.



# COLORED SERIES



207 NATURAL



210 RUSTSTONE



302 SHADOW



309 FUDGE



310 WALNUT



311 GOLDLEAF



315 CLAY BUFF



316 CAMEL



317 TANGERINE



324 LILAC



326 OAK



342 HOPPS



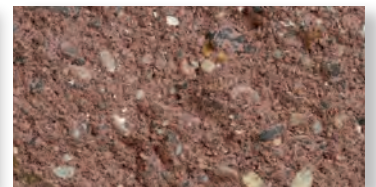
349 EXPRESSO



357 HERSHEY



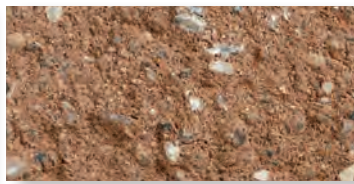
358 BRICK RED



361 BERRY



398 CEDAR



412 TERRA COTTA



418 SANTA FE



2025 Centre Pointe Blvd, Suite 300  
Mendota Heights, MN 55120  
651-688-9116  
[www.amconconcreteproducts.com](http://www.amconconcreteproducts.com)