

NORTHROCK[®] PRO

SEGMENTAL RETAINING WALL UNITS



NORTHROCK[®] PRO

NorthRock[®] Pro Segmental Retaining Wall Units are splitface, rear-lipped block designed for larger commercial, municipal, or residential retaining wall projects. Available in straight face or beveled face options and in a variety of earth tone colors. The NorthRock Pro system creates beautiful, classic walls that blend seamlessly into any landscape or environment.

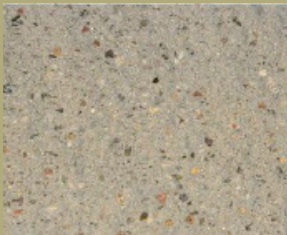
- For gravity walls or grid-reinforced walls
- Area of 1 sq. ft. per block
- Rear-lip provides 7.1° batter
- Volume of voids to back of unit: 0.40 cu. ft.
- Volume of voids including backfill*: 1.4 cu. ft.
- Available in straight or beveled face options
- Minimum outside radius (from top to front):
 - Straight face: 4' min. radius
 - Beveled face: 2' radius
- Minimum inside radius (from base to front):
 - Straight face: 6' min. radius
 - Beveled face: 4' min. radius
- Also available in custom colors

**Required backfill for proper drainage is ¾" rock with less than 10% fines or similar free-draining material filled 12" deep immediately behind the units.*

For more information on custom colors and other inquiries, please contact your local dealer, sales representative.

Unit	Pieces/ Cube	Block Height	Block Width	Block Depth	Block Weight	Sq. Ft./ Face	Cube Weight
8" Straight	32	8"	18"	12"	78 lbs.	1	2,536
8" Beveled	32	8"	18"	12"	75 lbs.	1	2,440
4" Cap	45	4"	18/14"	10½"	54 lbs.	.42	2,430
8" Corner	30	8"	18"	9"	103 lbs.	1.5	3,090

AVAILABLE COLORS



Glacier Gray



Golden Wheat



Shadow



Raw Umber

Available at:



2025 Centre Pointe Blvd, Suite 300
Mendota Heights, MN 55120
651.688.9116 • amconconcreteproducts.com